



Meridian™

2 Piece Cast

TRUNNION

DBB Ball Valve



Table of Contents:

Features & Benefits	4
Range, Certifications & Standards	6
2 Piece DBB	
Drawings	7
Dimensions	9
Top Works.....	12
Lifting Lug Data	15
Torque Data	16
Flow Coefficients (Cv)	17
Pressure / Temperature Reference	18
How to Order	19

.....

48/24 *Standard* WARRANTY

Meridian™ stands behind the products it sells and provides an industry leading warranty of 48 months from date of shipment or 24 months from the date of start-up (whichever is sooner) for all Meridian™ brand API 6D check valves, flanged or buttweld trunnion ball valves, and floating ball valves.

.....



KEY FEATURES & BENEFITS

GENERAL FEATURES

- Body joint integrity and fire safety is ensured by dual independent seals.
- A tight tolerance overlapping metal to metal body joint ensures valve is capable of handling pipeline stress and misalignment.
- Standard cast body and end cap construction.
- All designs use 2 antistatic devices.
- Manual body vent design allows safe relief of pressure prior to servicing.
- Manual body drain can be used to safely drain or flush the valve prior to being serviced or removed from line.
- All trunnion ball valves are equipped with a locking device to API 608. For gear operated valves, this feature is included on the gear operator.
- All trunnion ball valves are equipped with ISO 5211 actuator mounting flanges.
- All Meridian™ trunnion ball valves are low emission capable due to the o-ring design.
- All O-rings are of AED (anti-explosive decompression) design.
- Standard trim in either full stainless steel or 3 mil high phosphorus electroless nickel plated for superior corrosion protection.

STEM DESIGN FEATURES

- Blow out proof stem.
- Stems and trunnions are manufactured separately from the ball and supported by a bearing and thrust washer to ensure low consistent torques.
- Triple independent low emission stem seals ensure stem seal integrity.
- All valves include emergency secondary stem sealant injection system.

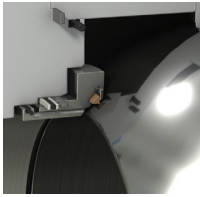
SEAT DESIGN FEATURES

- Special wide seat insert design provides an increased life in difficult service conditions.
- Seat ring sealing includes separate graphite seals for fire safe design and O-rings for tight sealing.
- Seat sealant injection: Meridian™ trunnion ball valves include seat sealant injection systems. For smaller size valves where space does not permit body cavity injection is used instead of seat sealant injection.
- All seat sealant injection fittings include an internal check valve and another independent buried check valve beneath the injection fitting. Should an injection fitting be damaged it can be replaced without the requirement of re-hydrotesting the valve.
- All valves are hydro-tested utilizing the check valve only (seat sealant injection fitting removed). This ensures check valve integrity.
- DBB - Double block and bleed design with self relieving body cavity per API 6D.

OPTIONAL FEATURES

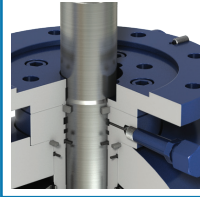
- Body may be coated for corrosion protection
- Cryogenic design and a world class cryogenic test and design facility also available.
- Top entry, welded body and high temperature designs also available.





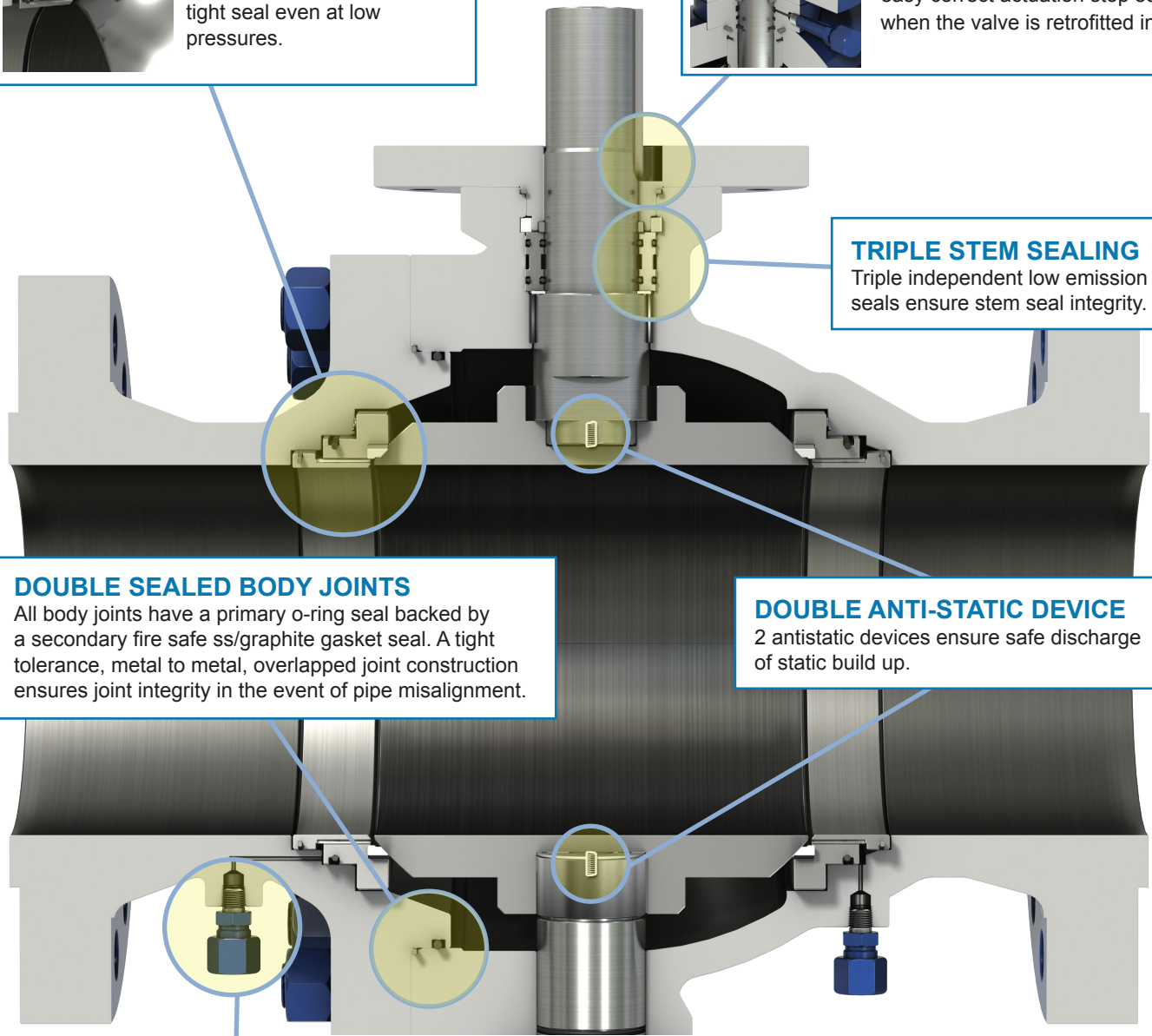
DBB SEATS

Seats have preloaded coil springs to ensure a bubble tight seal even at low pressures.



INTEGRAL VALVE STOPS

The valve stops are integral facilitating easy correct actuation stop setting when the valve is retrofitted in the field.



TRIPLE STEM SEALING

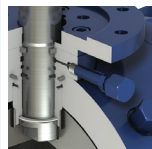
Triple independent low emission stem seals ensure stem seal integrity.

DOUBLE SEALED BODY JOINTS

All body joints have a primary o-ring seal backed by a secondary fire safe ss/graphite gasket seal. A tight tolerance, metal to metal, overlapped joint construction ensures joint integrity in the event of pipe misalignment.

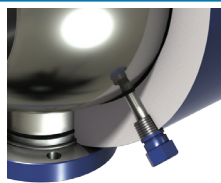
DOUBLE ANTI-STATIC DEVICE

2 antistatic devices ensure safe discharge of static build up.



EMERGENCY STEM & SEAT INJECTION FITTINGS

The standard design incorporates both stem and seat injection fittings (smaller sizes use cavity injection).



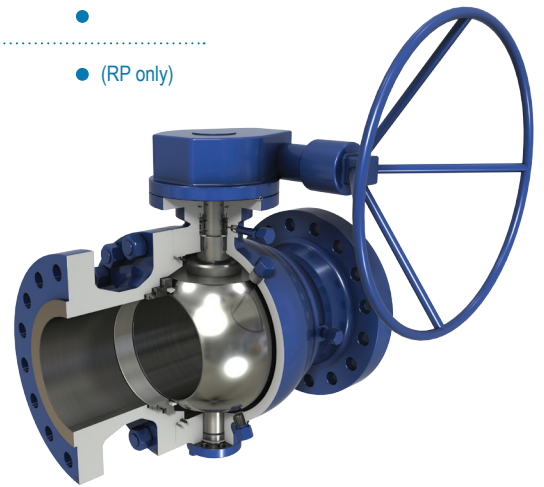
BODY VENT & DRAIN

For pressure relief prior to servicing and to allow for draining or flushing prior to servicing or removal.



2 PIECE CAST TRUNNION MOUNTED BALL VALVES

Size	150 ASME PN 20	300 ASME PN 50	600 ASME PN 100
2	●	●	●
3	●	●	●
4	●	●	●
6	●	●	●
8	●	●	●
10	●	●	●
12	●	●	● (RP only)



CERTIFICATIONS & TESTING:

All Meridian™ ball valves come complete with hydrostatic test certificates and MTRs (material test reports). All floating and trunnion ball valves are tested to the requirements of API 6D. In addition, floating and trunnion ball valves are ALL tested with low pressure air to ensure seat sealing at lower pressures.

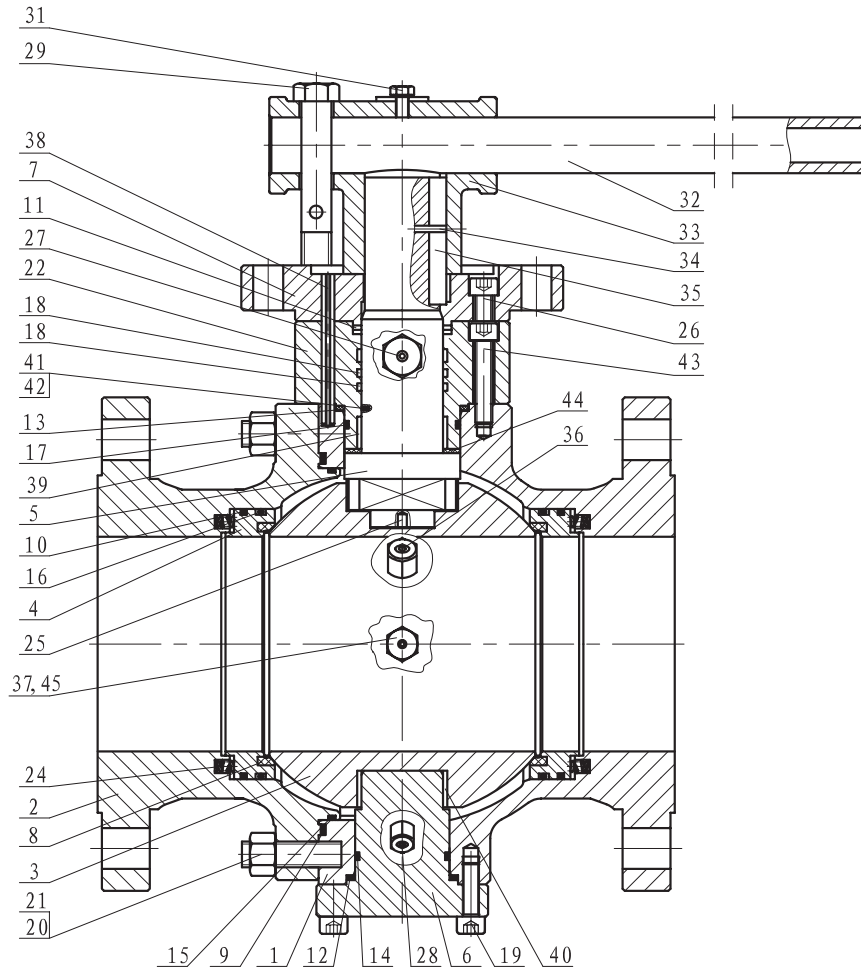
- For Canadian customers CRNs (Canadian Registration Numbers) are available for all provinces where required.
- Tagging is per the requirements of API 6D, MSS SP-25 and CSA Z245.15.

REFERENCE STANDARDS

GENERAL STANDARDS	API 608; API 6D; ISO 17292; CSA Z245.15; CSA B51		
PRESSURE / TEMPERATURE	ASME B16.34	END FLANGES	ASME B16.5
FACE TO FACE	ASME B16.10	FIRE SAFE DESIGN	ISO 10497 API 607, API 6FA
MARKINGS	MSS SP-25	SOUR SERVICE	NACE MR0175 ISO 15156
QUALITY	MSS SP-55	DOCUMENTATION	BS/EN 10204-3.1
INSPECTION	API 598	PRESSURE TESTING	API 6D ISO 5208

2 PIECE CAST LEVER OPERATED DBB

CROSS SECTIONAL DRAWING

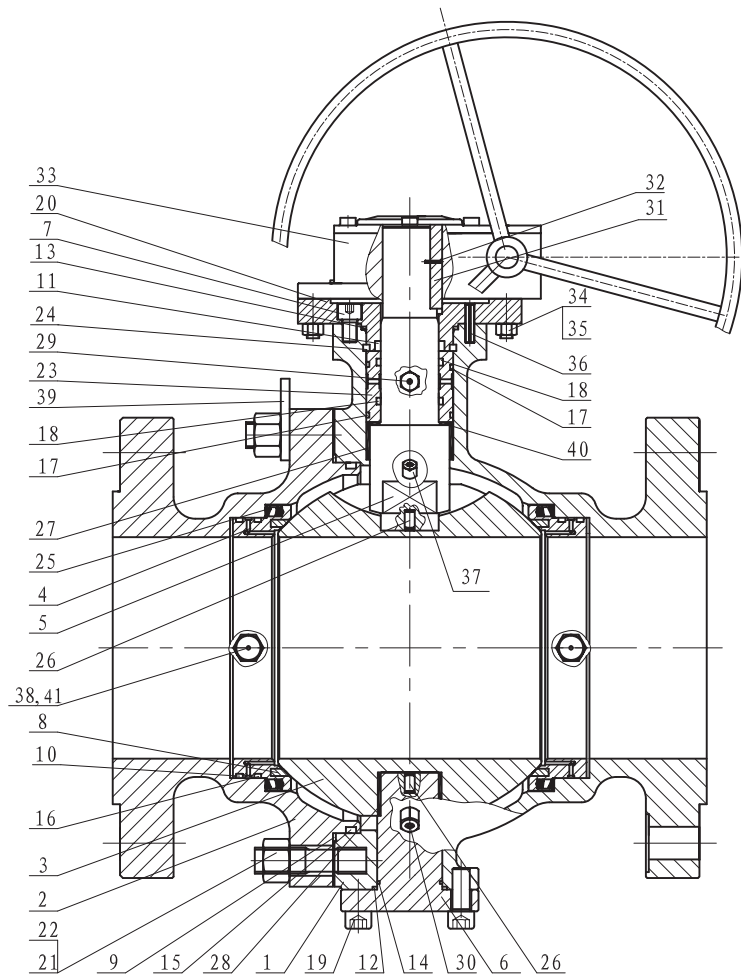


ITEM	DESCRIPTIONS	ITEM	DESCRIPTIONS	ITEM	DESCRIPTIONS
1	BODY	16	SEAT SEAL O-RING	32	LEVER
2	END CAP	17	UPPER CAP SEAL O-RING	33	LEVER HEAD
3	BALL	18	STEM SEAL O-RING	34	PIN
4	SEAT	19	ALLEN HEAD BOLT	35	KEY
5	STEM	20	STUD	36	VENT VALVE
6	TRUNNION	21	NUT	37	SEALANT INJECTION VALVE
7	LIMIT STOP PLATE	22	UPPER CAP	38	PIN
8	SEAT RING	24	SEAT SPRING	39	BEARING
9	FIRE SAFE GASKET	25	ANTISTATIC SPRING	40	BEARING
10	FIRE SAFE GASKET	26	ALLEN HEAD BOLT	41	ANTISTATIC SPRING
11	FIRE SAFE PACKING	27	SEALANT INJECTION VALVE	42	ANTISTATIC BALL
12	FIRE SAFE GASKET	28	DRAIN VALVE	43	ALLEN HEAD BOLT
13	FIRE SAFE GASKET	29	HEX HEAD BOLT	44	THRUST WASHER
14	TRUNNION SEAL O-RING	31	HEX HEAD BOLT	45	CHECK VALVE
15	BODY SEAL O-RING				

NOTE: Drawings are representative. Please contact Meridian for specific and current PDF drawings.

2 PIECE CAST GEAR OPERATED DBB

CROSS SECTIONAL DRAWING



ITEM	DESCRIPTIONS	ITEM	DESCRIPTIONS	ITEM	DESCRIPTIONS
1	BODY	15	BODY SEAL O-RING	29	SEALANT INJECTION VALVE
2	END CAP	16	SEAT SEAL O-RING	30	DRAIN VALVE
3	BALL	17	UPPER CAP SEAL O-RING	31	KEY
4	SEAT	18	STEM SEAL O-RING	32	PIN
5	STEM	19	ALLEN HEAD BOLT	33	GEAR OPERATOR
6	TRUNNION	20	LIMIT STOP PLATE	34	STUD
7	ALLEN HEAD BOLT	21	STUD	35	NUT
8	SEAT RING	22	NUT	36	PIN
9	FIRE SAFE GASKET	23	SEAL RING	37	VENT VALVE
10	FIRE SAFE GASKET	24	SEGMENT	38	SEALANT INJECTION VALVE
11	FIRE SAFE PACKING	25	SEAT SPRING	39	LIFTING LUGS
12	FIRE SAFE GASKET	26	ANTISTATIC SPRING	40	THRUST WASHER
13	FIRE SAFE GASKET	27	BEARING	41	CHECK VALVE
14	TRUNNION SEAL O-RING	28	BEARING		

NOTE: Drawings are representative. Please contact Meridian for specific and current PDF drawings. Space permitting, most valves include seat sealant injection (item 38/41). Select small valves use body cavity injection due to space constraints.

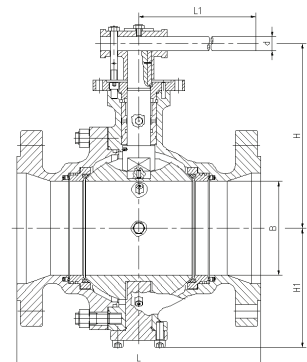
2 PIECE CAST DBB SIZES & DIMENSIONS

TRUNNION 2" to 6" LEVER OPERATED

Size in inches. Dimensions in mm and inches. Weights in kilograms and pounds.

PN ASME	SIZE	B-Port	L-RF	L-RTJ	H	H1	L1	d	Weight
	in	mm in	mm in	mm in	mm in	mm in	mm in	mm in	kg lb
20	2X1-1/2	38	178	191	*	*	*	*	14
150		1.50	7.01	7.52					30.86
20	2	50	178	191	181	102	300	20	17
150		1.97	7.01	7.52	7.13	4.02	11.81	0.79	37.48
20	3X2	50	203	216	181	102	300	20	25
150		1.97	7.99	8.50	7.13	4.02	11.81	0.79	55.12
20	3	75	203	216	203	120	400	25	30
150		2.95	7.99	8.50	7.99	4.72	15.75	0.98	66.14
20	4X3	75	229	241	203	120	400	25	40
150		2.95	9.02	9.49	7.99	4.72	15.75	0.98	88.18
20	4	100.1	229	241	233	135	450	25	48
150		3.94	9.02	9.49	9.17	5.31	17.72	0.98	105.82
20	6X4	100.1	394	406	233	135	450	25	96
150		3.94	15.51	15.98	9.17	5.31	17.72	0.98	211.64
50	2X1-1/2	38	216	232	142	85	277	20	16
300		1.50	8.50	9.13	5.59	3.35	10.91	0.79	35.27
50	2	50	216	232	181	102	300	20	21
300		1.97	8.50	9.13	7.13	4.02	11.81	0.79	46.30
50	3X2	50	283	298	181	102	300	20	29
300		1.97	11.14	11.73	7.13	4.02	11.81	0.79	63.93
50	3	75	283	298	203	120	500	25	36
300		2.95	11.14	11.73	7.99	4.72	19.69	0.98	79.37
50	4X3	75	305	321	203	120	500	25	58
300		2.95	12.01	12.64	7.99	4.72	19.69	0.98	127.87
50	4	100.1	305	321	235	140	600	25	86
300		3.94	12.01	12.64	9.25	5.51	23.62	0.98	189.60
50	6X4	100.1	403	419	235	140	600	25	128
300		3.94	15.87	16.50	9.25	5.51	23.62	0.98	282.19
100	2X1-1/2	38	292	295	*	*	*	*	25
600		1.50	11.50	11.61					55.12
100	2	51	292	295	168	102	500	20	30
600		2.01	11.50	11.61	6.61	4.02	19.69	0.79	66.14
100	3X2	51	356	359	168	102	500	20	42
600		2.01	14.02	14.13	6.61	4.02	19.69	0.79	92.59
100	3	76	356	359	191	126	700	25	55
600		2.99	14.02	14.13	7.52	4.96	27.56	0.98	121.25
100	4X3	76	432	435	191	126	700	25	72
600		2.99	17.01	17.13	7.52	4.96	27.56	0.98	158.73

NOTE: Please contact Meridian for specific and current drawings and data.
*Confirmation at time of order or upon request.



2 PIECE CAST DBB SIZES & DIMENSIONS

150 ASME TRUNNION 6" TO 12" GEAR OPERATED

Size in inches. Dimensions in mm and inches. Weights in kilograms and pounds.

	SIZE	B-Port	L-RF	L-RTJ	H	H1	A	Dia. A	Weight
PN	in	mm	mm	mm	mm	mm	mm	mm	kg
ASME		in	in	in	in	in	in	in	lb
20	6	151	394	406	278	190	229	465	100
150		5.94	15.51	15.98	10.94	7.48	9.02	18.31	220.46
20	8X6	151	457	470	278	190	229	465	150
150		5.94	17.99	18.50	10.94	7.48	9.02	18.31	330.69
20	8	202	457	470	330	238	360	600	172
150		7.95	17.99	18.50	12.99	9.37	14.17	23.62	379.19
20	10X8	202	533	546	330	238	360	600	275
150		7.95	20.98	21.50	12.99	9.37	14.17	23.62	606.27
20	10	252	533	546	382	291	402	600	284
150		9.92	20.98	21.50	15.04	11.46	15.83	23.62	626.11
20	12X10	252	610	622	382	291	402	600	482
150		9.92	24.02	24.49	15.04	11.46	15.83	23.62	1062.62
20	12	303	610	622	413	318	402	600	494
150		11.93	24.02	24.49	16.26	12.52	15.83	23.62	1089.07

NOTE: Please contact Meridian for specific and current drawings and data.

300 ASME TRUNNION 6" TO 12" GEAR OPERATED

Size in inches. Dimensions in mm and inches. Weights in kilograms and pounds.

	SIZE	B-Port	L-RF	L-RTJ	H	H1	A	Dia. A	Weight
PN	in	mm	mm	mm	mm	mm	mm	mm	kg
ASME		in	in	in	in	in	in	in	lb
50	6	151	403	419	278	190	229	465	170
300		5.94	15.87	16.50	10.94	7.48	9.02	18.31	374.78
50	8X6	151	502	518	278	190	229	465	202
300		5.94	19.76	20.39	10.94	7.48	9.02	18.31	445.33
50	8	202	502	518	330	238	360	600	246
300		7.95	19.76	20.39	12.99	9.37	14.17	23.62	542.33
50	10X8	202	568	584	330	238	360	600	300
300		7.95	22.36	22.99	12.99	9.37	14.17	23.62	661.38
50	10	252	568	584	382	291	402	600	308
300		9.92	22.36	22.99	15.04	11.46	15.83	23.62	679.02
50	12X10	252	648	664	382	291	402	600	496
300		9.92	25.51	26.14	15.04	11.46	15.83	23.62	1093.48
50	12	303	648	664	513	350	520	600	512
300		11.93	25.51	26.14	20.20	13.78	20.47	23.62	1128.76

NOTE: Please contact Meridian for specific and current drawings and data.

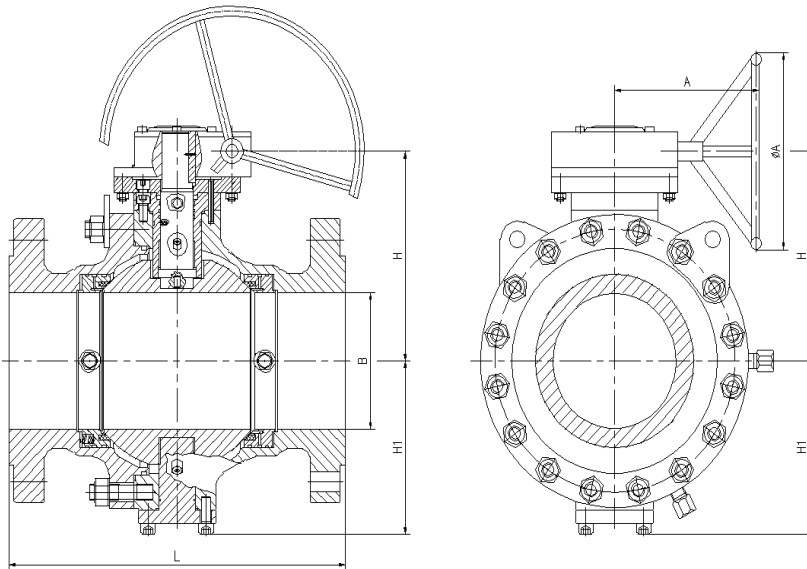
2 PIECE CAST DBB SIZES & DIMENSIONS

600 ASME TRUNNION 4" TO 12" GEAR OPERATED

Size in inches. Dimensions in mm and inches. Weights in kilograms and pounds.

PN ASME	SIZE	B-Port	L-RF	L-RTJ	H	H1	A	Dia. A	Weight
	in	mm in	mm in	mm in	mm in	mm in	mm in	mm in	kg lb
100	4	102	432	435	198	147	229	350	95
600		4.02	17.01	17.13	7.80	5.79	9.02	13.78	209.44
100	6X4	102	559	562	198	147	229	350	140
600		4.02	22.01	22.13	7.80	5.79	9.02	13.78	308.64
100	6	152	559	562	282	209	360	600	225
600		5.98	22.01	22.13	11.10	8.23	14.17	23.62	496.04
100	8X6	152	660	664	282	209	360	600	230
600		5.98	25.98	26.14	11.10	8.23	14.17	23.62	507.06
100	8	202	660	664	355	272	402	600	354
600		7.95	25.98	26.14	13.98	10.71	15.83	23.62	780.43
100	10X8	202	787	791	355	272	402	600	447
600		7.95	30.98	31.14	13.98	10.71	15.83	23.62	985.46
100	10	252	787	791	482	325	520	600	604
600		9.92	30.98	31.14	18.98	12.80	20.47	23.62	1331.58
100	12X10	252	838	841	482	325	520	600	740
600		9.92	32.99	33.11	18.98	12.80	20.47	23.62	1631.40

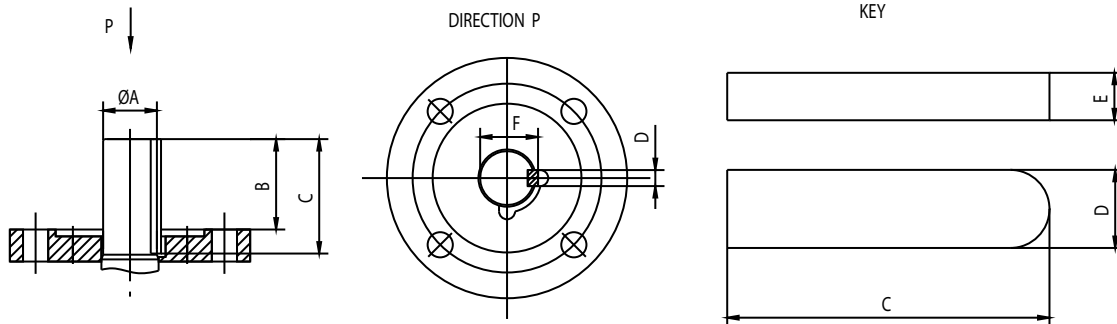
NOTE: Please contact Meridian for specific and current drawings and data.



2 PIECE CAST DBB TOP WORKS DIMENSIONS

PN 20 / 150 ASME FULL AND REDUCED PORT TRUNNION

Size in inches. Dimensions in mm and inches.



SIZE	A	B	C	D	E	F	ISO
in	mm	mm	mm	mm	mm	mm	
	in	in	in	in	in	in	
2X1 1/2"	*	*	*	*	*	*	*
2"	26	35	45	8	7	29	F10
	1.02	1.38	1.77	0.31	0.28	1.14	
3X2"	26	35	45	8	7	29	F10
	1.02	1.38	1.77	0.31	0.28	1.14	
3"	30	40	50	8	7	33	F12
	1.18	1.57	1.97	0.31	0.28	1.30	
4X3"	30	40	50	8	7	33	F12
	1.18	1.57	1.97	0.31	0.28	1.30	
4"	35	41	56	10	8	38	F12
	1.38	1.61	2.20	0.39	0.31	1.50	
6X4"	35	41	56	10	8	38	F12
	1.38	1.61	2.20	0.39	0.31	1.50	
6"	47	79	100	14	9	50.5	F16
	1.85	3.11	3.94	0.55	0.35	1.99	

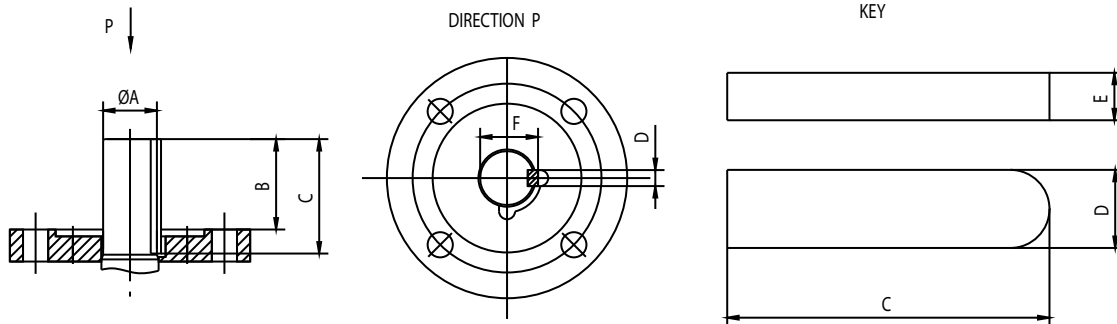
SIZE	A	B	C	D	E	F	ISO
in	mm	mm	mm	mm	mm	mm	
	in	in	in	in	in	in	
8X6"	47	79	100	14	9	50.5	F16
	1.85	3.11	3.94	0.55	0.35	1.99	
8"	52	88	110	16	10	56	F16
	2.05	3.46	4.33	0.63	0.39	2.20	
10X8"	52	88	110	16	10	56	F16
	2.05	3.46	4.33	0.63	0.39	2.20	
10"	62	85	110	18	11	66	F25
	2.44	3.35	4.33	0.71	0.43	2.60	
12X10"	62	85	110	18	11	66	F25
	2.44	3.35	4.33	0.71	0.43	2.60	
12"	62	88	110	18	11	66	F25
	2.44	3.46	4.33	0.71	0.43	2.60	

NOTE: Please contact Meridian for specific and current drawings and data.
*Confirmation at time of order or upon request.

2 PIECE CAST DBB TOP WORKS DIMENSIONS

PN 50 / 300 ASME FULL AND REDUCED PORT TRUNNION

Size in inches. Dimensions in mm and inches.



SIZE	A	B	C	D	E	F	ISO
in	mm	mm	mm	mm	mm	mm	
	in	in	in	in	in	in	
2X1 1/2"	20	29.5	40	6	6	22.5	F10
	0.79	1.16	1.57	0.24	0.24	0.89	
2"	26	35	45	8	7	29	F10
	1.02	1.38	1.77	0.31	0.28	1.14	
3X2"	26	35	45	8	7	29	F10
	1.02	1.38	1.77	0.31	0.28	1.14	
3"	30	40	50	8	7	33	F12
	1.18	1.57	1.97	0.31	0.28	1.30	
4X3"	30	40	50	8	7	33	F12
	1.18	1.57	1.97	0.31	0.28	1.30	
4"	35	41	56	10	8	38	F12
	1.38	1.61	2.20	0.39	0.31	1.50	
6X4"	35	41	56	10	8	38	F12
	1.38	1.61	2.20	0.39	0.31	1.50	
6"	47	79	100	14	9	50.5	F16
	1.85	3.11	3.94	0.55	0.35	1.99	

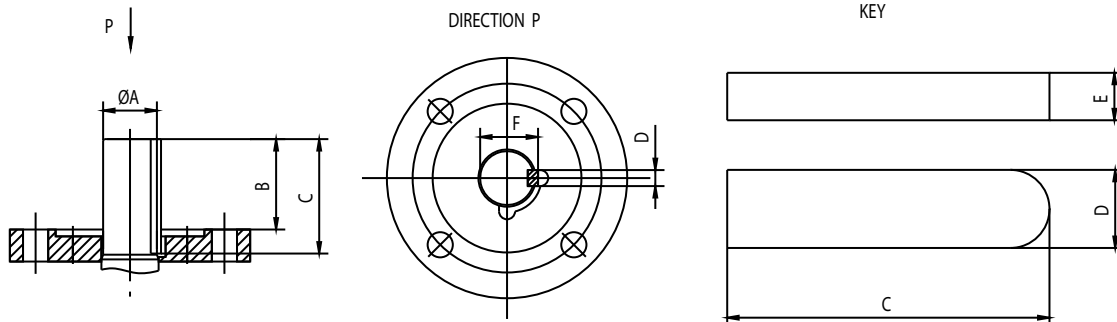
SIZE	A	B	C	D	E	F	ISO
in	mm	mm	mm	mm	mm	mm	
	in	in	in	in	in	in	
8X6"	47	79	100	14	9	50.5	F16
	1.85	3.11	3.94	0.55	0.35	1.99	
8"	52	88	110	16	10	56	F16
	2.05	3.46	4.33	0.63	0.39	2.20	
10X8"	52	88	110	16	10	56	F16
	2.05	3.46	4.33	0.63	0.39	2.20	
10"	62	85	110	18	11	66	F25
	2.44	3.35	4.33	0.71	0.43	2.60	
12X10"	62	85	110	18	11	66	F25
	2.44	3.35	4.33	0.71	0.43	2.60	
12"	62	88	110	18	11	66	F25
	2.44	3.46	4.33	0.71	0.43	2.60	

NOTE: Please contact Meridian for specific and current drawings and data.

2 PIECE CAST DBB TOP WORKS DIMENSIONS

PN 100 / 600 ASME FULL AND REDUCED PORT TRUNNION

Size in inches. Dimensions in mm and inches.



SIZE	A	B	C	D	E	F	ISO
in	mm	mm	mm	mm	mm	mm	
	in	in	in	in	in	in	
2X1 1/2"	*	*	*	*	*	*	*
2"	26	35	45	8	7	29	F12
	1.02	1.38	1.77	0.31	0.28	1.14	
3X2"	26	35	45	8	7	29	F12
	1.02	1.38	1.77	0.31	0.28	1.14	
3"	30	40	50	8	7	33	F12
	1.18	1.57	1.97	0.31	0.28	1.30	
4X3"	30	40	50	8	7	33	F12
	1.18	1.57	1.97	0.31	0.28	1.30	
4"	35	52	70	10	8	38	F12
	1.38	2.05	2.76	0.39	0.31	1.50	
6X4"	35	52	70	10	8	38	F12
	1.38	2.05	2.76	0.39	0.31	1.50	
6"	42	73	95	12	8	45	F16
	1.65	2.87	3.74	0.47	0.31	1.77	

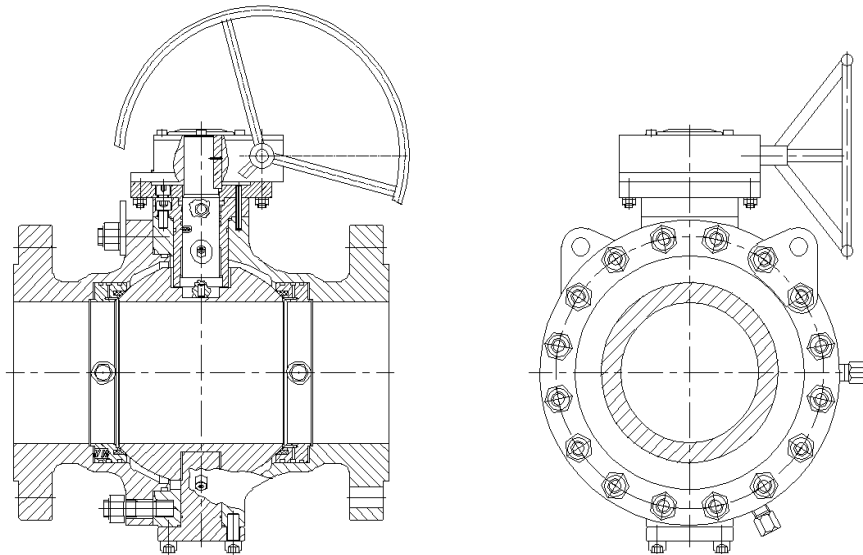
SIZE	A	B	C	D	E	F	ISO
in	mm	mm	mm	mm	mm	mm	
	in	in	in	in	in	in	
8X6"	42	73	95	12	8	45	F16
	1.65	2.87	3.74	0.47	0.31	1.77	
8"	52	85	110	16	10	56	F25
	2.05	3.35	4.33	0.63	0.39	2.20	
10X8"	52	85	110	16	10	56	F25
	2.05	3.35	4.33	0.63	0.39	2.20	
10"	62	85	110	18	11	66	F25
	2.44	3.35	4.33	0.71	0.43	2.60	
12X10"	62	85	110	18	11	66	F25
	2.44	3.35	4.33	0.71	0.43	2.60	

NOTE: Please contact Meridian for specific and current drawings and data.
*Confirmation at time of order or upon request.

2 PIECE CAST DBB

LIFTING LUG DATA

	150 ASME	300 ASME	600 ASME
SIZE in	Lifting Lugs	Lifting Lugs	Lifting Lugs
2X1 1/2"	N/A	N/A	N/A
2"	N/A	N/A	N/A
3X2"	N/A	N/A	N/A
3"	N/A	N/A	N/A
4X3"	N/A	N/A	N/A
4"	N/A	N/A	N/A
6X4"	N/A	N/A	N/A
6"	YES	YES	YES
8X6"	YES	YES	YES
8"	YES	YES	YES
10X8"	YES	YES	YES
10"	YES	YES	YES
12X10"	YES	YES	YES
12"	YES	YES	



2 PIECE CAST DBB TORQUE DATA

Size (In)	Open (break) torque (inch pounds) at Max. P		
	150 ASME	300 ASME	600 ASME
2X1.5"	478	597	1195
2"	597	956	1971
3"	717	1195	3106
4"	1553	2509	5496
6"	4540	6930	11350
8"	8124	16727	24492
10"	13142	27479	35245
12"	19116	32258	N/A

- NOTE:**
1. Torque values are in inch pounds. To convert to Newton meters divide inch pounds by 8.85.
 2. For reduced port valves not shown select torque based on valve bore size. For example: 4" x 3" x 300 ASME valve – use torque for 3" x 300 ASME valve.
 3. Torque includes safety factor.
 4. For clean wet applications in low temperature service below -20 Deg C (-4 Deg F) add 10% safety.
 5. Add additional safety if service conditions dictate.
 6. Torque for sizes not shown is available upon request.
 7. Torques shown are based on the following seat materials:
 - 2 piece trunnions (single piston seats):
 - Class 150 - 300 ASME valves have RPTFE seat rings;
 - Class 600 ASME valves have Devlon seat rings.

2 PIECE CAST DBB CV VALUES

FULL BORE

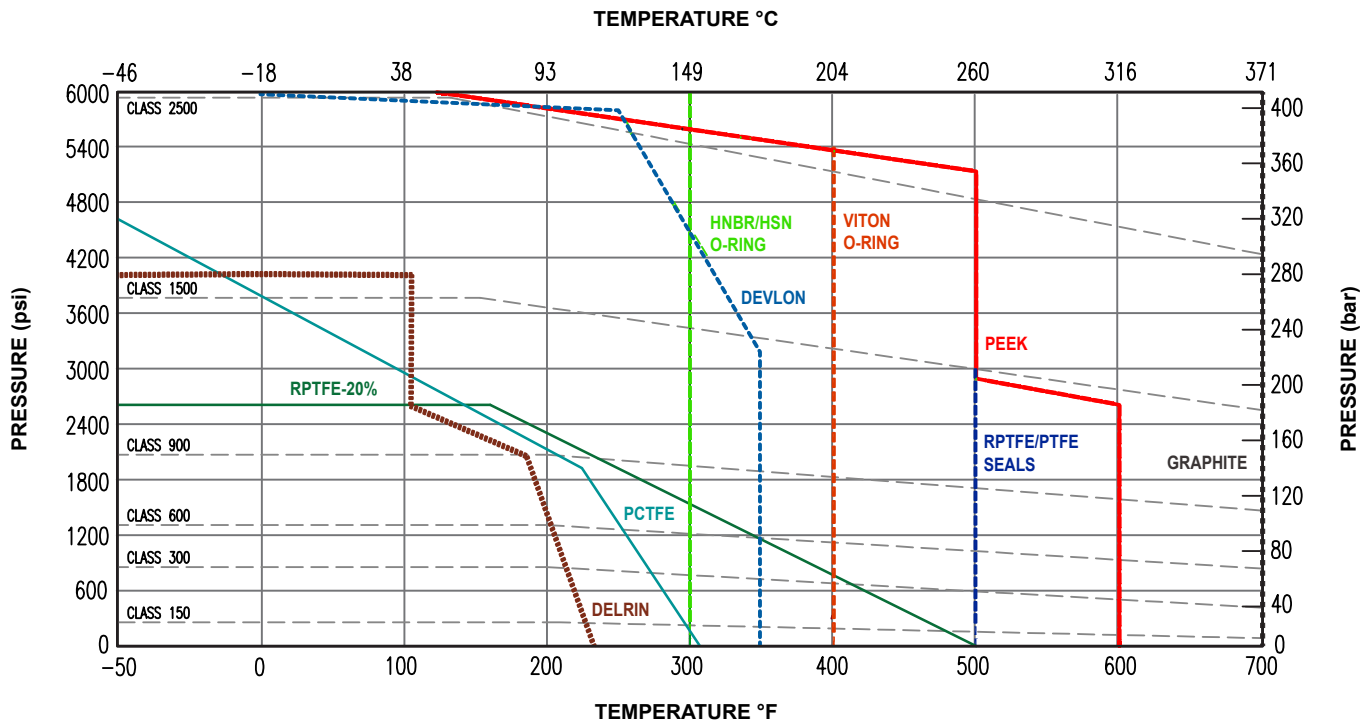
Size (In)	150 ASME	300 ASME	600 ASME
2	647	647	647
3	2086	2086	2086
4	2694	2694	2694
6	6062	6062	6062
8	10885	10885	10885
10	17109	17109	17109
12	24734	24734	N/A

REDUCED BORE

Size (In)	150 ASME	300 ASME	600 ASME
2*1 1/2	306	306	306
3*2	377	377	377
4*3	1043	1043	1043
6*4	1587	1587	1587
8*6	4364	4364	4364
10*8	7495	7495	7495
12*10	13470	13470	13470

- NOTE:**
1. Larger size data available on request.
 2. Flow coefficient Cv is the volume (in US gallons) of water at 60°F that will flow per minute through a valve with a pressure drop of 1 psi across the valve.

REFERENCE PRESSURE/TEMPERATURE CHART



Please consult ASME B16.34 for specific body material pressure / temperature ratings. The above chart is for reference only, please call for specific / additional seat and seal technical information if required.

MERIDIAN™ “CHECKPOINT”

Critical Control Point Check System

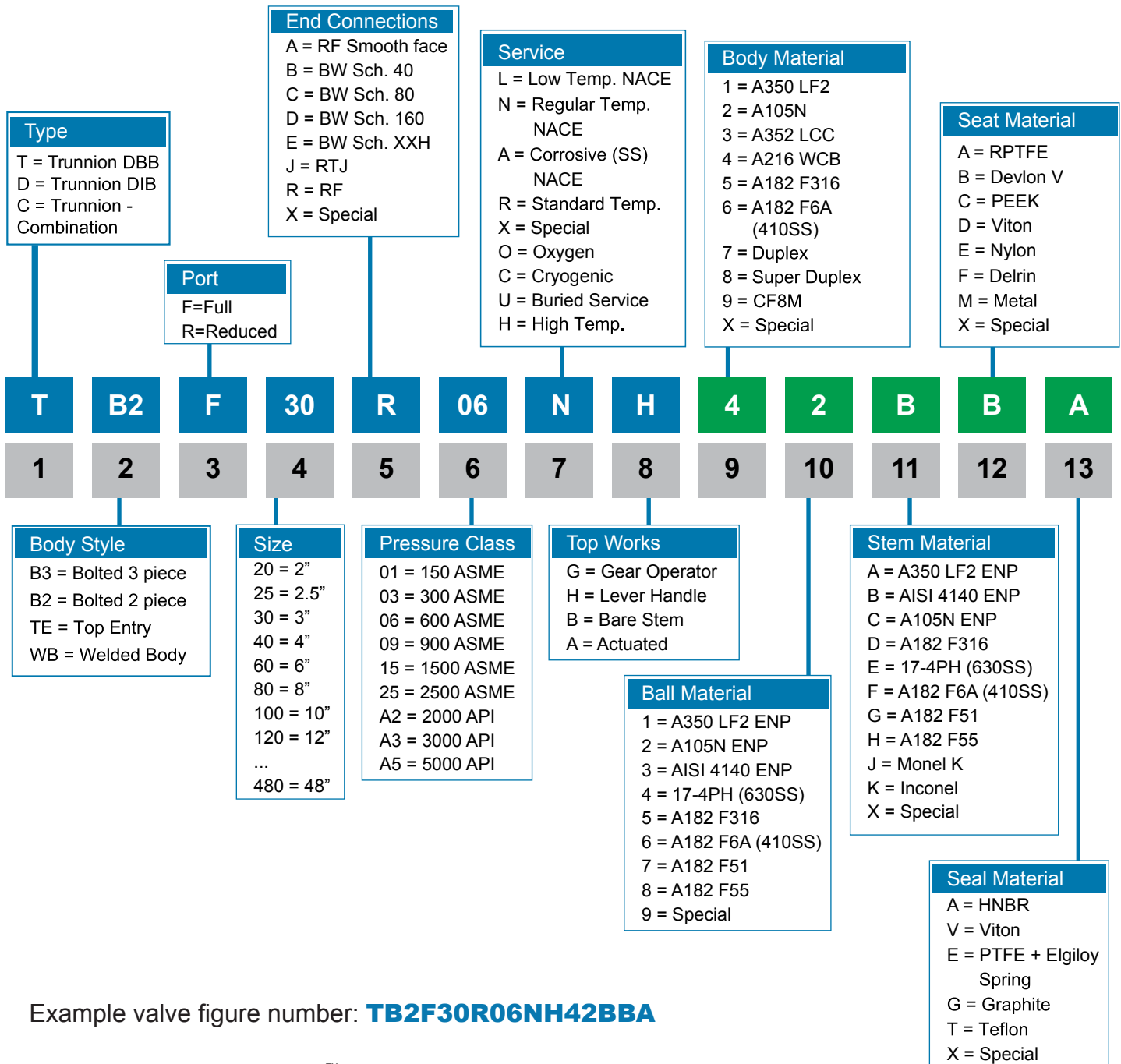
Our internal manufacturing and process quality system leverages “critical control point” data to provide a high level of quality and manufacturing control. Key components of the CHECKPOINT process include:

- A database that links CHECKPOINT manufacturing plant input to a specific valve serial number.
- Visual review and/or inspection and sign-off at each stage in the process.
- Checklist / traveler for each valve / component in production that tracks its progress from raw material to finished product.
- Ability to monitor CHECKPOINT data remotely.



HOW TO ORDER

ORDERING FIGURE NUMBER CHART



Example valve figure number: **TB2F30R06NH42BBA**

This code represents a Meridian™ trunnion ball valve with a bolted 2 piece body, full port bore, 3" size, raised face end connection, 600 ASME, with a regular temperature NACE design, lever handle, A216 WCB body, A105N ENP ball, AISI 4140 ENP stem, Devlon V seat ring, and HNBR seals.



To learn more about Meridian™ please visit our website at:
www.meridianvalve.ca

Meridian™ is a registered trademark of Wolseley Industrial Canada Inc. (Wolseley Industrial)
The contents hereof are confidential and proprietary. Any unauthorized reproduction or disclosure, in whole or in part, is strictly prohibited.
The material in this catalogue is for general information only, may not reflect the most current product information and is not guaranteed to be complete and may not be used or relied upon for specific performance data or for the purposes of material selection or determining suitability without first consulting Wolseley Industrial. Wolseley Industrial reserves the right to change this information without notice. Wolseley Industrial expressly disclaims any and all liability or damages arising or resulting from the use of or reliance upon the information in this catalogue.